

Annual Report

2022-23

“ Saltbush provides us the opportunity to have a holiday we wouldn't otherwise have. It gives us something to look forward to, helps the family reconnect and allows us to have a fresh start and reset after the holiday. ”



Acknowledgment of Country

Located on the land of the Bunurong People of the Kulin Nation, we acknowledge the Traditional Custodians and their connection to this land on which we rest, play, connect and grow. We recognise First Nations stewardship and management of the land for many thousands of years and we are inspired by their history of caring for country. We acknowledge and respect their contributions, experience, and knowledge as First Nations people.

Saltbush, Balnarring Beach is an inclusive, safe and respectful organisation which actively supports the inclusion of children, young people and adults from LGBTQIA+ communities, people with disabilities and people from diverse cultural, religious and linguistic backgrounds.



Annual Report

2022-23

Contents

Who We Are _____	4	A Year at Saltbush: Programs _____	14
Chairperson’s Report _____	6	A Year at Saltbush: Capital Projects _____	17
CEO’s Report _____	7	A Year at Saltbush: Donors _____	18
Our History _____	9	A Year at Saltbush: Volunteers _____	19
Meet the Team _____	11	A Year at Saltbush: Community Partnerships____	20
Strategic Plan 2023-2028 _____	12	Saltbush Referrers _____	21
Facts and Figures _____	13	Green Team’s Report _____	22
		Financial Reports _____	23

Who We Are

Saltbush, Balnarring Beach is a not-for-profit, charitable organisation. We exist to enrich the lives of people experiencing hardship by providing a peaceful environment for rest, play, growth and connection. We welcome over 1500 people every year, including families, individuals and groups for holidays, programs and retreats.

Our Values

Justice: We prioritise supporting those who face barriers to access.

Hospitality: We are warm, welcoming and inclusive.

Hope: We create experiences that are uplifting.

Our Principles

Strengths-based:

We recognise that through facing various challenges, our guests have often developed life skills and coping strategies that allow them to navigate complex situations. We work with guests to help them have a comfortable stay, and focus on what's possible and preferable for them.

Inclusive:

We believe that all people, regardless of their abilities, social class, sexuality, gender, and cultural, linguistic and/or religious diversity, should be able to enjoy a peaceful and restful holiday.

Connecting:

At Saltbush we value connection; be it to self, to others, to spirituality, or to the natural world. We acknowledge the importance of connection for our guests, which can provide a sense of safety, happiness and purpose, and some protection from the challenges of life.

Nature:

We know that access to, and appreciation of the natural world is not available to all. We consciously incorporate nature into our programs and experiences, and encourage our guests to find peace and comfort in the natural world.

Choice:

We respect the autonomy of our guests and encourage them to consider the most suitable holiday experience for them, at this moment in their lives.



Our Founders - The Presentation Sisters

In 1989 the Presentation Sisters, who had a long history in education in Victoria, decided to serve families in a new way. They created the Presentation Family Centre, “a retreat in a place of beauty with space to provide respite, recreation, education and support for families and individuals in difficult circumstances, including financial difficulty, family breakdown, domestic violence, illness, disability, social or cultural isolation and other circumstances of distress”. Presentation Family Centre (now Saltbush, Balnarring Beach) was managed by the resident Presentation Sisters until 2009.

A Community Work of Kildare Ministries

In 2017, The Presentation Sisters entrusted Saltbush, Balnarring Beach to Kildare Ministries, an organisation created in 2014 which comprises the education and community works formerly governed by the Presentation Sisters of Victoria, and the Brigidine Sisters of Victoria and NSW. Saltbush, Balnarring Beach is one of three Community Works of Kildare Ministries, along with Wellsprings For Women and The Brigidine Asylum Seeker Project (BASP). Kildare Ministries also provide governance to ten schools around Australia including Star of the Sea College, Clonard College, Marian College Ararat, Marian College Sunshine, Kilbreda College, Killester College, and St Joseph’s College in Victoria.





Phillip Steele

Chair, Saltbush Balnarring Beach

Chairperson's Report

On behalf of the Board of Management, I would like to thank you for your interest in Saltbush Balnarring Beach and welcome you to the 2022-2023 Annual Report.

With generous support from our donors, volunteers and supporters, we have continued to welcome and nurture our guests, further develop our services, improve our physical facilities and enhance our management and governance arrangements. Much has been achieved and we are continuing our work to ensure that Saltbush Balnarring Beach will be able to provide its important role for our guests in the years ahead.

We have welcomed 1626 guests who have overwhelmingly given us very positive feedback on their stay at Saltbush. We aim to offer welcome, warmth and safety to all our guests so they will leave Saltbush with very fond memories and with their spirits renewed. We have continued to offer our much-loved School Holiday Programs, Nourish for Carer Retreats and have welcomed many families, individuals, school and community groups. We have held working bees where school students, teachers and friends of Saltbush freely give of their time to help us, and artists retreats, where beautiful art, inspired by the natural environment around Saltbush, is gifted to our site.

With the support of our generous donors, we continue to upgrade our beautiful site guided by our Masterplan and Environmental Charter. Following widespread consultation,

we have started work on a new front entrance which will provide an accessible, and much more attractive welcome for our guests and visitors. We have upgraded some houses by installing new floors and bathrooms. All houses now have electric heat pump hot water services, split system heating/cooling, solar panels and electric cooktops and ovens. This has eliminated the use of gas completely, so Saltbush is doing its best to reduce its environmental impact.

We have also made significant improvements to streamline and professionalise our administrative, management and governance arrangements. We have developed a strategic plan, website and have measured the impact of our services on guests. The Board is working to implement the results of a recent external Board review which will assist us to enhance our governance arrangements in future. The Board subcommittees, Fundraising & Finance, Risk & Governance, and the Green Team have all been busy during the year.

I would like to thank our retiring Board members, Christine Barren and Ian Urquhart who have made an outstanding contribution to the Board and to Saltbush over many years. I would also like to welcome and thank our new Board members Jan Aitcheson, Shelley Isles and Charles Reis.

Message from our Chair (continued)

Saltbush Balnarring Beach is in a sound financial position. We strive to keep our fees and charges as low as possible for our guests. The Board realises that we must increase our fundraising capacity substantially in the years ahead to keep our fees low, properly support our guests, and achieve our vision. We must also ensure the long-term financial viability of Saltbush.

The Foundation Fund (previously called the Future Fund) is now well established. All donations to this fund are held in perpetuity as long-term investments designed to provide an annual income stream to Saltbush. Our commitment to Foundation Fund donors is that income generated from the Foundation Fund will be used to support Saltbush Balnarring Beach or re-invested in the Foundation Fund. We have also received generous donations to the Accommodation Fund which helps us support guests undergoing financial hardship.

On behalf of the Board, I would like to thank all our guests for choosing to stay at Saltbush. I would like to sincerely thank our very generous donors for your continued financial support. Without you, Saltbush would not be able to continue to operate. I would like to thank our volunteers, supporters and friends who have helped us in all sorts of ways during the year, giving so freely of their time, energy and ideas.

I would like to thank our founders, the Presentation Sisters of Victoria for their continued financial support and for the ongoing interest, support and encouragement that they so warmly provide. A special thanks also to Kildare Ministries for their active assistance with the development of our policies

and governance arrangements and the vital connections they facilitate to the ten Kildare Ministries schools and two other community works.

I would like to especially thank our outstanding staff, Rachel Connor, Chief Executive Officer, Megan Willis, Operations Coordinator and Cassie Mills, Communications Coordinator. Our caring, capable and professional staff embody the spirit of welcome, warmth, hospitality and care that is central to our mission.

It is a great personal privilege for me to be the Chairperson of the Saltbush Balnarring Beach Board. I continue to be inspired by the kindness, generosity, and commitment of all those who support the important work we do.

I would like to take this opportunity to wish you every blessing for a safe, joyful and peaceful Christmas full of hope, love and joy. I look forward to working with each one of you next year.

CEO's Report



Rachel Connor

CEO, Saltbush Balnarring Beach

Saltbush welcomed 1626 guests in 2022-2023.

Saltbush is a peaceful place where guests tell us they feel safe and welcome. We know that guests enjoy their experience at Saltbush – 98% of guests report that they are satisfied or very satisfied with their stay. Guests also tell us that time at Saltbush has a longer-term, positive impact on their lives. Results from our Impact Survey suggest 87% of guests were able to rest and recharge during their stay, 63% noticed an improvement in their mental health, and 60% implemented new self-care strategies following their stay. Crucially, we learned that without Saltbush, 71% of guests would not be able to afford respite or a holiday.

It has been a busy and productive year at Saltbush.

Highlights include:

- We provided low-cost accommodation and programs to more people than ever before.
- We provided \$26,280 worth of funded stays for people most in need and without access to government or other funding.
- We commenced work on the first stage of our masterplan, the development of a new and accessible entry.
- We welcomed a record number of volunteers who contributed \$77,991 in value to Saltbush.
- We implemented significant upgrades to houses including two new bathrooms, new flooring in one house and four new heat pump hot water systems
- We partnered with the local community to increase understanding of our work and support for Saltbush.
- We eliminated gas from the Saltbush site, with all energy now sourced from electricity supported by solar panels.

Saltbush programs are planned with our guests needs at the forefront and are designed according to our principles of inclusivity, connection, nature, choice, and focusing on the strength of our guests. We provided five weeks of school holidays programs, our annual Youth Adventure Program, three Carer Retreats (one of these in partnership with Peninsula Health), and two Artist in Residencies. We are grateful to our partners, facilitators, volunteers, and artists who contribute their ideas and energy to these programs.

The presentation of our houses and site are key to delivering an experience that is impactful and uplifting. One guest told us that her financial situation often meant she stayed in 'cheap' places that don't feel "lovely and nourishing to my spirit like Saltbush".

In addition to new bathrooms and flooring, this year we have introduced new bookshelves, books, rugs, artwork, and soft furnishings, and landscaped and added Indigenous vegetation around houses. The houses are cosy and inviting. These improvements are highly valued by guests and would not be possible with the generosity of donors. The improvements in houses and our site are implemented by our small team of three part time staff, volunteers, our wonderful cleaning team, talented handyman, supportive gardening team and array of contractors and energetic volunteers. I would like to acknowledge their dedication to providing a high-quality service.

I would like to thank our Communications Coordinator, Cassie and Operations Coordinator, Megan who apply their considerable resourcefulness, initiative, and talents to ensuring Saltbush is a warm, welcoming, and uplifting experience for guests. I would also like to thank our Programs Coordinator, Jade, who helped us to establish the principles that guide our School Holiday Programs and Carers Retreats, including her focus on nature and connection, which will continue to shape our programs.

I would like to thank our founders, the Presentation Sisters for their continued support, and Kildare Ministries for their leadership in governance. To our departing board members, Ian Urquhart and Christine Barren: your contribution to Saltbush will endure, thank you.

To our donors, volunteers, and community supporters, I would like to say a very big thank you. We could not provide the service that we do without your ongoing support. Thank you for your interest in Saltbush. We hope that you will continue to support us so that we can positively impact the lives of over 1500 people a year, delivering our vision of restorative holidays and experiences for those who need it most.

Saltbush History

1989



1989: Founded by Presentation Sisters of Victoria

Land is purchased and set aside for houses to "provide support and respite programs for individuals, families and groups of persons suffering as a result of financial distress, sickness, disability and other necessitous circumstances". Construction of six houses, play facilities, and a multipurpose centre is overseen by the Presentation Sisters.

Summer of 1990: First school holiday program

Saltbush, Balnarring Beach (then called Presentation Family Holidays) opens for the summer of 1989/90. In the first holiday program, over 100 families apply to participate and the Presentation Sisters are able to welcome 50 families.



1992

Programs are run by Presentation Sisters and volunteers, and by 1992, 360 families had attended Presentation Family Centre.

2000



Early 2000's

The Saltbush houses are available for independent holidays and school holiday programs.

2004

New playground and activity areas added to site.



2009: Board of Directors and staff appointed

A board of directors is appointed to provide governance and staff are appointed to manage the day to day operations. Connections with referral agencies begins to identify people in need.



2007

Families from across Victoria come together while exploring the natural environment at Balnarring Beach.



2014

A new governance structure is created and named Kildare Ministries, which comprises the education and community works formerly governed by the Presentation Sisters of Victoria, and the Brigidine Sisters of Victoria and NSW.

Saltbush History (continued)

2016

The 'Shed' (now called the Nanospace) is extended to create more space for school holiday programs.



2021: Saltbush, Balnarring Beach

A new trading name, Saltbush, Balnarring Beach, and logo are introduced.



2021: Youth Adventure Programs and Carers Retreat

The Youth Adventure Programs and Carers Retreats are introduced to better connect people with themselves, other people, and with nature, by providing activities and opportunities for rest, play, and growth.

2022: Accommodation Fund

The Accommodation Fund is established to partially or fully fund accommodation and experiences for guests who would otherwise struggle to have access.



Present

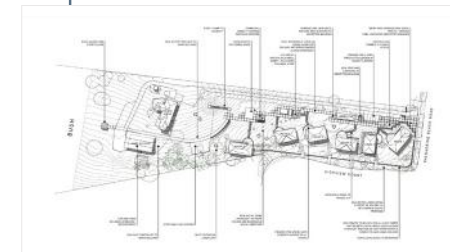
2017: Presentation Sisters entrusts Presentation Family Centre to Kildare Ministries

Presentation Family Centre is entrusted to Kildare Ministries, as one of three Community Works of Kildare Ministries, along with Wellsprings For Women and The Brigidine Asylum Seeker Project (BASP). Kildare Ministries also provide governance to ten schools around Australia, including Star of the Sea College, Clonard College, Killester College, Kilbreda College, St Joseph's College, Echuca and Marian College, Ararat and Sunshine West.



2021: Saltbush Environmental Charter

The Saltbush Environmental Charter is developed by the Saltbush Green Team, and endorsed by the Board, to declare our commitment to act in the face of the global climate crisis.



2022: Masterplan

The Saltbush Masterplan is established to provide a framework that facilitates thoughtful short term capital works projects while ensuring cohesive development of the site.

2022: Foundation Fund

The Foundation Fund is created to build a corpus of funds that are invested, with the interest used to provide ongoing operational support to Saltbush. The Foundation will enable Saltbush to continue to provide an enriching and restorative experience for our guests who are experiencing hardship.

Meet the Team

Board of Directors



Philip Steele
Chairperson
Appointed February 2018



Claire Thorn
Deputy Chairperson
Appointed February 2018



Shelley Iles
Appointed September 2021



Jan Aitcheson
Appointed November 2021



Charles Reis
Appointed October 2022



Christine Barren
Minutes Secretary
Appointed October 2015
Retired 2023



Ian Urquhart
Treasurer
Appointed May 2014
Retired 2023

Staff



Rachel Connor
CEO



Cassie Mills
Communications Coordinator



Megan Willis
Operations Coordinator



Dr. Jade Warner
Programs Coordinator
Resigned 2023

Strategic Plan 2023-28

A restorative experience for guests who are in need	A beautiful, well cared for site that meets the needs of guests now and into the future	A connected community of stakeholders working together to support our guests and service	Strong governance, financial & environmental sustainability
<ol style="list-style-type: none"> 1. Saltbush has high quality school holiday programs that are consistent with our principles, are impactful, and in demand. 2. Saltbush offers a range of high quality experiences that meet the needs of a variety of guests, including carers, guests with disabilities, Indigenous groups, people seeking asylum. 3. Saltbush maintains a high standard of service that exceeds guests expectations. 	<ol style="list-style-type: none"> 1. The Masterplan implementation leads to an inclusive, revitalised site that connects guests to each other and to nature, provides a range of ways to enjoy the space, and enhances the experience of guests and the local community. 2. A refurbishment plan that improves bathrooms, kitchens and internal spaces in houses that delivers a high quality and accessible experience for guests. 3. A Landscape Plan that leads to a native garden, edible garden, and peaceful spaces that exist harmoniously in the Mornington Peninsula landscape, and positively impacts guests and the local community. 	<ol style="list-style-type: none"> 1. A sustainable and reputable volunteer program that positively impacts volunteers and guests, and is consistent with our principles and values. 2. Saltbush’s communication strategy leads to an accurate and positive profile, and impactful relationships with the local and wider community, referrers, community service organisations and donors. 3. A strong, valued and connected network of Saltbush supporters. 	<ol style="list-style-type: none"> 1. A strong and growing Investment Fund that sustains Saltbush’s expanding service. 2. A robust governance structure with effective people, policies and processes, guided by the 2021 external board review recommendations. 3. Saltbush is known in the community and by guests as an environmentally progressive and sustainable site and service.

We Welcomed

1626
Guests

295
Bookings



1146
Adults

480
Children

919
Women and girls

481
Men and boys

226
Non-binary or not specified

Our Guests Are Impacted By

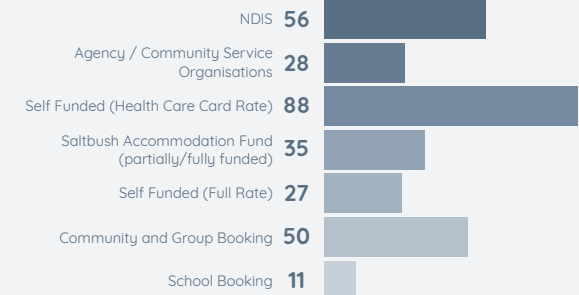
- Financial vulnerability
- Disability
- Caring for children with special needs
- Caring for partner or parent
- Mental ill health
- Seeking asylum
- Known family violence
- Foster care families
- Managing grief and loss

> 50%

Of guests are first introduced to Saltbush via referral agencies.



Bookings Funded By



Our Service

5

Weeks of School Holiday Programs

3

Saltbush Carers Retreats

1

Youth Adventure Program

4

School Community Service Groups

1

Community Working Bee

2

Artists in Residence

Additional Support Provided

\$26,280

Worth of funded stays



100

Food packs to our guests

83

Tickets to local attractions

6

Asylum seeker families supported in School Holiday Programs

Volunteers

107

Volunteers

1664

Volunteer hours

78

School students and teachers participated in community service

\$77,991

Calculated in-kind contribution



Guest Experience

98%

Of guests were satisfied or very satisfied with their stay

100%

Of guests are likely or very likely to recommend Saltbush to family and friends

Our Impact

87%

Of guests were able to rest and recharge at Saltbush

73%

Were able to look after health and wellbeing

63%

Noticed an improvement in mental health

59%

Spent more time in nature than usual

60%

Implemented new self care strategies following their stay



Why We Exist

71%

Would not otherwise be able to afford a holiday



60%

Would not otherwise get a break

71%

Would not otherwise get enough respite to manage their circumstances

A Year at Saltbush Programs

School Holiday Programs

In 2022 - 2023, 33 families came together for the following Saltbush School Holiday Programs:

- Winter 2022 (4 - 10 July)
- Spring 2022 (19 - 25 September)
- Summer 2023 (3 - 8 January)
- Youth Adventure Program 2023 (9 - 13 January)
- Autumn 2023 (11 - 16 April)
- Winter 2023 (26 - 30 June)

The School Holiday Programs introduce families to the Balnarring bush and beach, provide opportunities for creativity, imagination and new experiences, while fostering inclusive play and personal autonomy.

Activities included art and craft days, beach walks, cooking classes, surfing lessons, soap moulding, bush scavenger hunts, and independent adventures to the Moonlit Sanctuary and Enchanted Adventures Maze.

These programs connect family members with each other, with other families, and with the natural landscape of Balnarring Beach and its surrounds. Kids ages ranged between 3 and 16 years. We welcomed single-parent families, foster care families, asylum seeker families, families living with disability, kinship care families, and families experiencing

difficult circumstances. Many of these families received funding support from the Saltbush Accommodation Fund, which is supported by donors or from the NDIS.

“At night we share with the family the best part of our day ... my son said this is the most fun he has ever had. It is so good to be able to have some time with [my son], as our current living situation now takes a lot of our focus.”

“It’s the first time I have seen them laugh and smile like that ... there was no fighting or arguing, they tried new things and were smiling all day ... it’s just been so hard, I can’t tell you what this means to me.”



A Year at Saltbush Programs

Carers Programs

Saltbush welcomed 25 carers for the following programs:

- Carers Retreats
(7 -9, 9 - 11 November 2022)
- Peninsula Health Carer Network Retreat
(15 - 17 May 2023)

Carer retreats are grounded in our principles of inclusivity, connection, and using strengths-based lens to ensure our carers can rest and recharge in whatever way that looks for them. Activities included DIY spa, massages, mindfulness activities, native floristry, and shared meals. Importantly, this was a time for carers to share stories, learn from and support one another, and feel connected with those in similar circumstances.

“I am a carer for a 76 year old person who has cognitive issues and stage 4 cancer ... I have had no help at home except for a cleaner for two 2-hour sessions. I have struggled mentally and physically and really needed a break. Being with the other carers helps [me] to realise I am not alone and we feed off each other’s circumstances, learning from each other’s ideas.”

“As a full time carer for my husband [and mother], taking time out for self care is a rarity. I almost didn’t come, and didn’t think I’d be able to relax enough to enjoy myself. I arrived, went to my room and burst into tears, and nearly got in the car and went home. I did stay though, and did manage to forget about home and everyone else for a bit. I can’t tell you how much I needed this small break to reset and recharge.”



A Year at Saltbush Programs

Artist in Residence

In 2022 - 2023 the Saltbush Artist in Residence was introduced, with the purpose of supporting artists, enriching Saltbush, fostering creativity and providing opportunities for community collaboration. These artists both spent a fortnight or more at Saltbush, drawing inspiration from the natural spaces of the site and wider Balnarring Beach, to each create works of art that reflected the spirit of Saltbush and the artist, and resulted in some surprising and meaningful community connections



Kate Gorringe-Smith Residency (11th July - 25th July 2022)

Kate's residency was dedicated to developing The Flock at Saltbush, a community project designed to bring awareness to the importance of migratory bird habitat protection (first created by the Pūkoro Miramira Shorebird Centre and the Overwintering Project). Kate has created many projects on migratory birds and how they connect humans globally. She helped lead a collaborative effort between the various community groups, schools, and the local Mornington Peninsula community to achieve the Saltbush Flock. The Main Ridge Men's Shed, Star of the Sea College, Marian College Sunshine West, St Joseph's Echuca, Clonard College Geelong, and the local Mornington Peninsula community were all involved in creating 100 wooden bird silhouettes, painting and lacquering them, and rendering and painting the wall at House 4 for installation of the Flock. It was a fantastic, multi-dimensional project that brought many community members together, while providing Saltbush with an art installation for guests to enjoy on site.

Ingrid K Brooker Residency (22nd August - 19th September 2022)

An excerpt from Ingrid's website:

"The beauty of this residency was that I had no obligations as to what I had to create. I could use the time as I pleased, which gave me the freedom to wait until I got there to see how the place spoke to me and what I felt inspired to create. For me, Saltbush delivered exactly what it promised: restoration through connection with nature."

"Fairly soon on my daily walks, the soundscape started speaking to me. And I came up with the idea of creating visual responses to the local sonic landscapes."

"I hope, through beauty or intrigue, to encourage people to take a closer look at their local environments and interact with them more intimately. I hope that by sharing how I see and hear the world, that my work may help connect people to place - that they may be inspired to observe and investigate the intricacies of their own environments. If people become more aware of the fine balances of nature and ecosystems around them, then they are more likely to care, respect, and act for the benefit of their environment. I hope my art can nurture or prompt this process."

A Year at Saltbush Capital Projects

The support of major donors and community grants allows for the improvement of the Saltbush houses and grounds. This financial year, we have achieved the following:

- Installed 4 heat-pump hot water systems, consequently eliminating gas from the Saltbush site
- Replaced damaged gutters at House 2
- Renovated the bathroom in House 3
- Installed eco-friendly insulation in House 3
- Upgraded House 4 flooring
- Renovated the bathroom in House 4
- Installed a second AED at the Nanospace



A Year at Saltbush Donors

As a charitable organisation, our service is dependent on the generous contributions of donors and supporters. Through their assistance, we are able to make capital upgrades, improve the house interiors and household items, enhance our programs, and better support our guests through additional supplies, or funded holidays. We are grateful to our long-term supporters and thrilled to continue building new connections, ultimately better servicing those who need it most.

In the 2022 - 2023 Financial Year, we gratefully received \$444,602.52 in grants and donations.

Donations were made to the following:

Saltbush Accommodation Fund, used to support people who would otherwise not be able to access a holiday, retreat or program for financial reasons.

Capital Projects, to improve the Saltbush houses and grounds.

Foundation Fund, an investment fund established with the interest generated to provide long term operational support.

General Donations, to support Saltbush to deliver its vision.

\$250,000 or more

Presentation Sisters Victoria

\$30,000 or more

Community Bank Balnarring & District

\$20,000 or more

Anonymous Donor

Anonymous Donor

Department of Jobs, Skills, Industry and Regions

\$10,000 or more

Mornington Peninsula Shire Council

\$5,000 or more

CCI Giving

Freemasons Foundation Victoria

Middle Park Masonic Lodge

Star of the Sea College

\$2,000 or more

Barbra Streisand Tribute Show

Sustainability Victoria

William Angliss Charitable Fund

\$1,000 or more

Ave House (Star of the Sea College)

Red Hill District Lions Club

Up to \$999.00

Avila College Alumni

Balnarring Ladies Probus

Carmel Ellis

Charles Reis

Department of Land, Water and Planning

Flinders Writer's Talk

Mornington Peninsula Koala Conservation Group

Penelope Johns

Phillip Steele

Rachel Connor

Ritchies SUPA IGA Balnarring

Rosemary Copeland

Sue Lee

Susan Beanland

A Year at Saltbush Volunteers

As a not-for-profit with a small number of staff and limited funds, volunteers are an integral component of the Saltbush service and what we are able to achieve.

This financial year, Saltbush had 107 volunteers supporting us at working bees, community service days, operations support, the Saltbush Green Team, School Holiday Programs and Carers Retreats.

This work and support accrued 1664 volunteer hours, calculating an in-kind contribution of \$77,991.68 (using the Mornington Peninsula Shire volunteer hourly rate).

Saltbush held 1 working bee and 4 school community service days.

Volunteer tasks and projects included planting, weeding, mulching and trimming of gardens; table sanding and painting; pathway and window cleaning; wall rendering and painting; painting and lacquering of the Flock, compost installation, kitchen audit and organisation, veggie box regenerating, Wilderness planting, and operations support, programs support, green team development and fundraising.

We gratefully thank our volunteers for their ongoing support:

Adrian Foley
Celeste Dowd
Chloe Farmer
Claire Thorn
Dani Swindlehurst
Emily Read
Holly Angwin
Ian Urquhart
Iona Presentation College Perth
Jack Willis
Jan Aitcheson
Jean Phillips
Jennifer Wraight
Jessica Arena
Jill Midlovets
Kane Rixon
Lucy Willis
Marian College Ararat
Marian College Sunshine West
Padua College Tyabb
Phillip Steele
Rex Swindlehurst
Rennie Liffen

Shane Smith
Simon Willis
Sister Joan Power PBVM
Sister Mary Keogh PBVM
Star of the Sea College
St Joseph's College Echuca
Tom Leydon



A Year at Saltbush

Community Partnerships and Fundraisers

Saltbush is thrilled to be supported by our local community through donations, sponsorship, and community participation. Fostering community relationships helps create a stronger and more interconnected community, and opens avenues for mutual support. Saltbush is pleased to support the Balnarring Food Co-op, Balnarring Playgroup, Westernport Biosphere, Mornington Peninsula Landcare Group and Mornington Peninsula Koala Conservation group.

Flinders Fringe Festival (18th February 2023)



FLINDERS FRINGE

“Watch Closely Now” Barbra Streisand Tribute Show (13th May 2023)



Flinders Writer’s Talk (7th June 2023)



Saltbush thanks our community supporters for their contributions to our service:

- Birdlife Mornington Peninsula, for their generous and informative gift of The Reader’s Digest Complete Book of Australian Birds book.
- East Coast Surf School, for supporting our Youth Adventure Program
- Flinders Fringe Festival, for their support of The Flock project
- Polly’s Farm, for donating soaps to programs and retreats
- Linen House Hastings, for donating bed linen for our houses
- Red Hill Op Shop, for a voucher for crockery and kitchen items
- Jacqi Russo, for her donation of beautifully designed origami paper and decorative paper chain sets
- Flinders Probus, for food pack and Christmas gift donations
- St Brendans Somerville, for food pack donations
- St Vincent de Paul Hastings, for food pack donations
- Rex & Dani Swindle-Hurst, for their art supplies donation

A Year at Saltbush

Our Referrers

More than half of our guests were introduced to Saltbush via referral agencies including mental health organisations, carer support services, hospitals, schools, disability support services, and organisations who work with families recovering from violence.

This year, we had over 70 bookings made directly through a referrer. Many more guests were originally referred and now book their own stays at Saltbush.

We thank these community service organisations and more for their work in helping those in need of a break to access respite at Saltbush.

Our referrers include:

The logo for Alfred Health, featuring the text "AlfredHealth" in a bold, sans-serif font. "Alfred" is in red and "Health" is in black.The logo for basp (Brigidine Asylum Seekers Project), featuring a red square with a white flame-like icon and the text "basp" in white, with "Brigidine Asylum Seekers Project" in smaller text below.The logo for Carers Australia VIC, featuring a stylized red and blue figure and the text "Carers Australia VIC" in black.The logo for tandem, featuring the word "tandem" in blue lowercase letters and a colorful fan-like graphic to the right.The logo for Foundation House, featuring a purple house icon and the text "Foundation House" in black, with "The Victorian Foundation for Survivors of Torture Inc." in smaller text below.The logo for GENWEST, featuring the word "GENWEST" in a bold, black, slanted font on an orange background.The logo for PLAN MANAGERS, featuring a purple circular icon with a white figure and the text "PLAN MANAGERS" in purple uppercase letters.The logo for maple plan, featuring a red maple leaf icon and the text "maple plan" in black lowercase letters.The logo for Monash Health, featuring a blue square icon with a white 'M' and the text "Monash Health" in black.The logo for Wellsprings for women, featuring the text "Wellsprings for women" in blue and a graphic of a woman's silhouette with a blue stream flowing from her head into a circular well.The logo for Peninsula Health, featuring a blue and green circular icon and the text "Peninsula Health" in black.The logo for St Vincent de Paul Society, featuring a circular blue icon with hands and the text "St Vincent de Paul Society" and "Good Works" around the perimeter.

Green Team's Report

This year, the Green Team has continued to make strides in our mission for significant climate action at Saltbush. Guided by our 2020 Environmental Charter and Saltbush Masterplan, we have been able to make capital upgrades and operational improvements, while also providing opportunities for community collaboration to reduce our carbon footprint and encourage environmental conservation. In our commitment to act, we recognise the Bunurong People of the Kulin Nation and the thousands of years of First Nations land stewardship and management that has taken place over these lands and waters.



This financial year, the Saltbush Green Team has:

- Successfully attained 3 grants for Green initiatives, totaling approximately \$15,000.
- Installed 4 heat pump hot water systems, thus eliminating all gas usage on the Saltbush site.
- Installed environmentally-friendly insulation to House 3.
- Restored the House 6 rock wall with local indigenous plants at the Saltbush working bee.
- Installed compost bins at each house.
- Switched to a Green Power energy provider.



Financial Report

2022-23

Statement of surplus or deficit and other comprehensive income for year ended 30 June, 2023

	2023	2022
	\$	\$
Revenue	671,965	853,405
Expenses	-388,633	-395,375
Net Surplus	283,332	458,031
Other Comprehensive Income	-22,899	-57,139
Total Comprehensive Income	260,433	400,892

Statement Of Changes In Equity as at 30 June, 2023

Accumulated surplus at the beginning of the year	1,172,177	771,285
Surplus for the year	260,433	400,892
Accumulated surplus at the end of the year	1,432,610	1,172,177

Statement of Cash Flows for year ended 30 June, 2023

	2023	2022
	\$	\$
Cash Flows From Activities		
Cash receipts in course of ordinary activities	199,534	103,425
Cash receipts from grants and donations	410,366	745,120
Cash payments in course of ordinary activities	-307,018	-349,181
Net Cash Provided (Used) By Operating Activities	302,882	499,364
Cash Flows From Investing Activities		
Interest and Dividends received	15,581	15,037
Proceeds from Sale of Vehicle	0	0
Payments for Investments	-203,168	-586,207
Payments for furniture, fixtures, plant and equipment	-93,010	-14,087
Net Cash Provided (Used) By Investing Activities	-280,597	-585,257
Net Increase (Decrease) In Cash Held	22,285	-85,893
Cash Flow Summary		
Cash at beginning of financial year	216,789	302,682
Net increase (decrease) in cash held	22,285	-85,893
Cash at end of financial year	239,074	216,789

Statement of financial position

as at June, 2023

	2023	2022
	\$	\$
Current Assets		
Cash and Cash Equivalents	239,074	216,789
Receivables	25,618	10,112
Total Current Assets	264,692	226,901
Non Current Assets		
Financial Assets held at Fair Value	737,464	529,067
Property, Plant & Equipment	495,412	450,670
Total Non Current Assets	1,232,876	979,737
Total Assets	1,497,568	1,206,638

	2023	2022
	\$	\$
Current Liabilities		
Accounts Payable - Accruals	20,114	22,817
Provision for annual leave and long service leave	3,418	2,650
GST Payable	791	0
Unearned Income	40,635	8,995
Total Current Liabilities	64,958	34,462
Non Current Liabilities		
Provision for long service leave	0	0
Total Non Current Liabilities	0	0
Total Liabilities	64,958	34,462
Net Assets	1,432,610	1,172,177
Members Funds		
Accumulated Income at the end of the year	1,432,610	1,172,177
Total Members Funds	1,432,610	1,172,177

Notes To Financial Statements

for year ended 30 June,2023

	2023	2022
	\$	\$
Revenue		
Income generated by the program	211,848	92,194
Interest and Dividends received	43,708	15,038
Grants and Donations		
- Specific Purpose Grants	107,883	117,226
- Government Covid Support	0	0
- General Donations	302,483	627,207
Donations in Kind	0	0
Other Income	6,043	1,741
Total Revenue	671,965	853,405
Expenses		
Operating Expenses	88,518	83,297
Repairs and Maintenance	32,627	19,427
Staff Expenses	216,351	225,723
Depreciation of Fixed Assets	48,264	46,032
Other Expenses	3,340	20,896
Total Expenses	389,100	395,375
Cash At Bank And Cash Equivalents		
Cash at Bank and in hand	239,074	216,789
Total Cash at Bank	239,074	216,789

	2023	2022
	\$	\$
Reconciliation of net profit after tax to net cash flows from operations		
Net profit	260,433	400,892
Adjustments for:		
Depreciation and amortisation	48,264	46,032
Other Comprehensive Income	22,899	57,139
Donations in kind	0	0
Donated Equipment Expenses	0	0
Amounts reclassified as investing activities		
Interest and Dividends received	-43,708	-15,038
Changes in assets and liabilities		
(Increase)/decrease in trade and other receivables	-14,876	-3,713
(Decrease)/increase in trade and other payables	29,102	20,998
(Decrease)/ increase in employee entitlement provisions	768	-6,945
Net cash from operating activities	302,882	499,364
Receivables		
Current		
GST receivable	0	3,069
Trade receivables	12,415	2,360
Franking Credit and Interest Receivable	13,199	4,683
Total Receivables	25,614	10,112

Notes To Financial Statements

for year ended 30 June,2023 (continued)

	2023	2022
	\$	\$
Property, Plant & Equipment		
Land and Buildings		
At cost	241,687	241,687
Accumulated depreciation	-72,596	-61,764
Total	169,091	179,923
Plant and Equipment		
At Cost	207,186	193,773
Accumulated depreciation	-167,128	-154,195
Total	40,058	39,578
Furniture, Fixtures and Fittings		
At Cost	161,060	161,060
Accumulated depreciation	-129,499	-119,531
Total	31,561	41,529
Office Equipment		
At Cost	15,067	15,067
Accumulated depreciation	-12,293	-11,701
Total	2,774	3,366

	2023	2022
	\$	\$
Computer Software		
At Cost	8,730	8,730
Accumulated depreciation	-8,730	-8,730
Total	0	0
Leasehold Improvements		
At Cost	285,817	270,067
Accumulated depreciation	-97,736	-83,793
Total	188,081	186,274
Capital Work In Progress	63,847	0
Total Property, Plant and Equipment	495,412	450,670
Other Comprehensive Income		
Unrealised (gain)/loss on Investment	22,899	57,139

Directors Declaration

30 June 2023

The Board of Management declares that

1. The financial statements and notes, as set out in pages 23-26, are in accordance with the Australian Charities and Not-for-profits Commission Act 2012 and:
 - a. comply with Australian accounting standards and the Australian Charities and Not-for-profits Commission Regulation 2013; and
 - b. give a true and fair view of the financial position as at 30 June 2023 and of the performance for the year ended on that date of the Association.
2. In the Board of Management's opinion, there are reasonable grounds to believe that the Association will be able to pay its debts as and when they become due and payable.

This statement is made in accordance with a resolution of the Board of Management and is signed for and on behalf of the Board of Management by:



.....
Phillip Steele



.....
Shelley Iles

Date: 13 September 2023

**Independent Audit Report
To the Members of Presentation Family Centre Inc**

Report on the Audit of the Financial Report

Opinion

We have audited the accompanying financial report, being a special purpose financial report, of Presentation Family Centre Inc, ("the Association"), which comprises the statement of financial position as at 30 June 2023, the statement of profit or loss and other comprehensive income, the statement of changes in equity and the statement of cash flows for the year then ended and notes to the financial statements, including a summary of significant accounting policies, and the Committee's declaration.

In our opinion, the accompanying financial report of the Association is in accordance with the *Associations Incorporation Reform Act 2012*, including:

- a. giving a true and fair view of the Association's financial position as at 30 June 2023 and of its financial performance for the year ended on that date in accordance with the accounting policies described in Note 1.

Basis for Opinion

We conducted our audit in accordance with Australian Auditing Standards. Our responsibilities under those standards are further described in the *Auditor's Responsibilities for the Audit of the Financial Report* section of our report. We are independent of the Association in accordance with the independence requirements of the *Associations Incorporation Reform Act 2012* and the ethical requirements of the Accounting Professional and Ethical Standards Board's APES 110 *Code of Ethics for Professional Accountants* ("the Code") that are relevant to our audit of the financial report in Australia. We have also fulfilled our other ethical responsibilities in accordance with the Code.

We believe that the audit evidence we have obtained is sufficient and appropriate to provide a basis for our audit opinion.

Emphasis of Matter – Basis of Accounting

Without modifying our opinion, we draw attention to Note 1 of the financial report, which describes the basis of accounting. The financial report has been prepared for the purpose of fulfilling the Committee's financial reporting responsibilities under the *Associations Incorporation Reform Act 2012*. As a result, the financial report may not be suitable for another purpose.

Responsibilities of the Committee for the Financial Report

The Committee of the Association are responsible for the preparation of the financial report that gives a true and fair view in accordance with Australian Accounting Standards and the *Associations Incorporation Reform Act 2012* and for such internal control as the Committee determines is necessary to enable the preparation of the financial report that gives a true and fair view and is free from material misstatement, whether due to fraud or error.

**Independent Audit Report
To the Members of Presentation Family Centre Inc (cont'd)**

Responsibilities of the Committee for the Financial Report (cont'd)

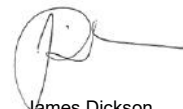
In preparing the financial report, the Committee are responsible for assessing the ability of the Association to continue as a going concern, disclosing, as applicable, matters related to going concern and using the going concern basis of *accounting* unless the Committee either intend to liquidate the Association or to cease operations, or have no realistic alternative but to do so.

Auditor's Responsibilities for the Audit of the Financial Report

Our objectives are to obtain reasonable assurance about whether the financial report as a whole is free from material misstatement, whether due to fraud or error, and to issue an auditor's report that includes our opinion. Reasonable assurance is a high level of assurance, but is not a guarantee that an audit conducted in accordance with Australian Auditing Standards will always detect a material misstatement when it exists. Misstatements can arise from fraud or error and are considered material if, individually or in the aggregate, they could reasonably be expected to influence the economic decisions of users taken on the basis of this financial report.

A further description of our responsibilities for the audit of the financial report is located at the Auditing and Assurance Standards Board website at: <http://www.auasb.gov.au/Home.aspx>. This description forms part of our auditor's report.

Stannards Accountants and Advisors



James Dickson
Partner
Date: 13th September 2023